

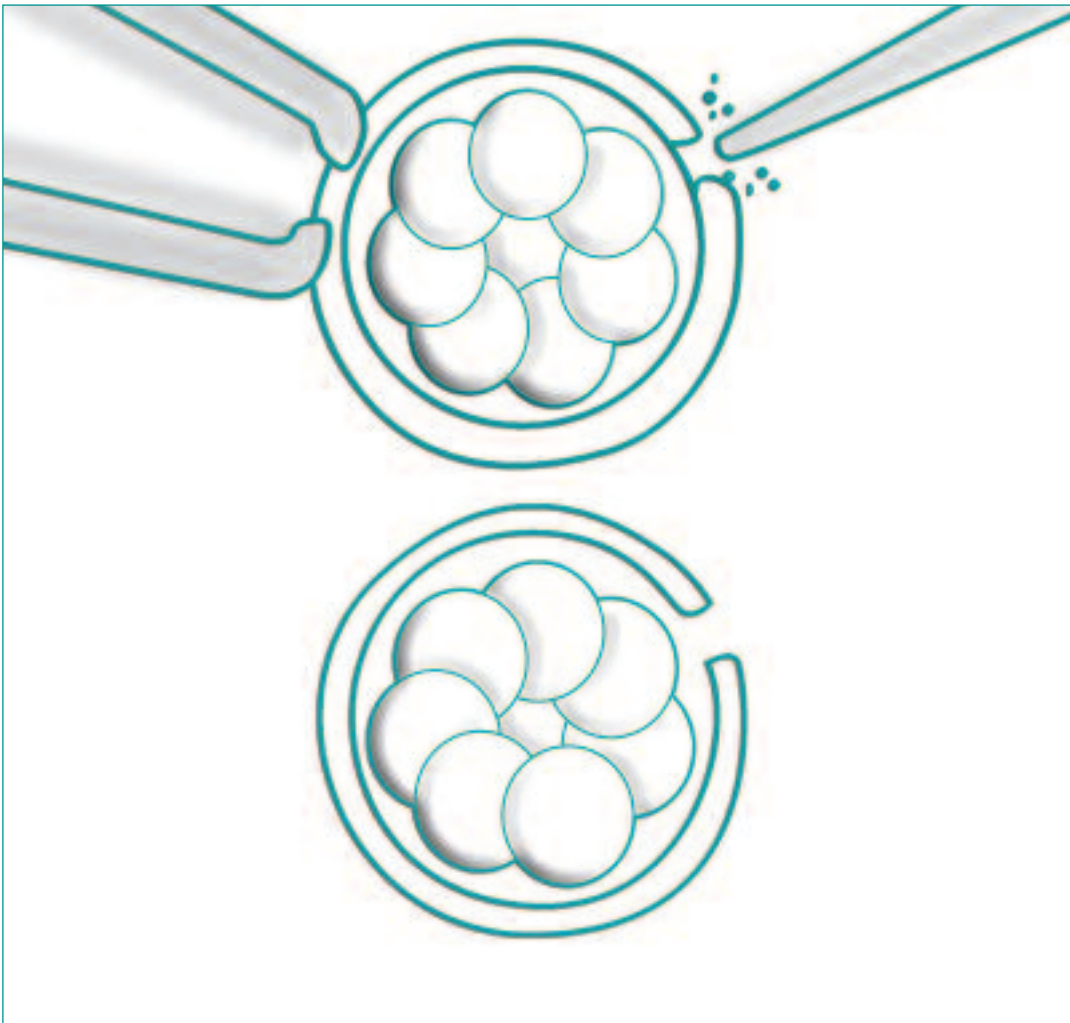
ASSISTED “HATCHING”

Definition: This technique is complementary to the In Vitro Fertilisation processes and involves thinning and making a small opening in the shell (zona pellucida) surrounding the embryo, thereby helping it to “hatch” out of the shell and improving its likelihood of implanting in the uterus.

Indication:

- Women of an advanced age with high levels of FSH.
- If the embryos obtained are highly fragmented or have a thicker zona pellucida.
- If several In Vitro Fertilisation cycles have failed.

Advantages: Aids implantation of the embryo in the maternal uterus.



*Assisted
Hatching*